

PICMG Backplane

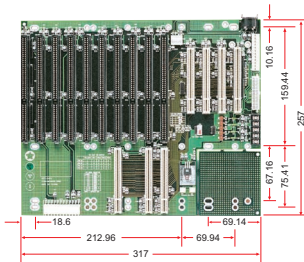
ACTI COMMON FEATURE

- 3rd generation design of ACTI-Backplane
- Enhanced PCB thickness to prevent bending
- Specially designed capacitor which lowers the ESR and prevents explosion
- Well-designed power ensures sufficient power is delivered to every slot

ACTI-14P4

14-slot (4xPCI) Active PICMG Backplane

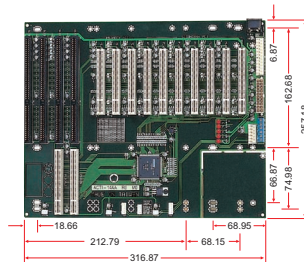
- 2.4 mm PCB thickness
- ATX power connector support
- Fit for 14-slot chassis



ACTI-14AA

14-slot (10xPCI) Active PICMG Backplane

- 2.4 mm PCB thickness
- ATX power connector support
- Fit for 14-slot chassis



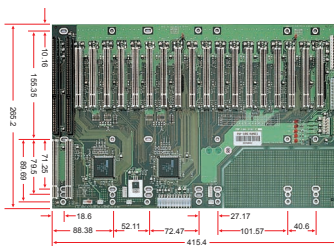
WHAT'S ACTIVE BACKPLANE?

To support more PCI slots (such as 7, 12 and 18 slots), we adopt the most popular PCI bridge chipset to extend PCI slots. Traditional Backplanes only allow passive components to be put on the Backplanes.

To meet this demand, we put the active chipset on the Backplanes. Therefore, they will be no longer called "Passive Backplanes" but "Active Backplanes".

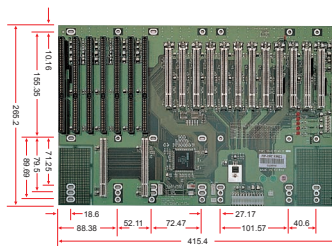
PBP-19AI

19-slot (18xPCI) Active PICMG Backplane



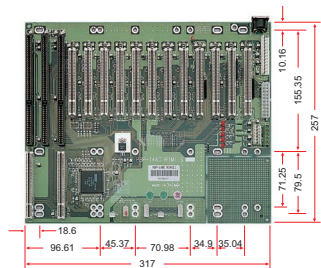
PBP-19AC

19-slot (12xPCI) Active PICMG Backplane



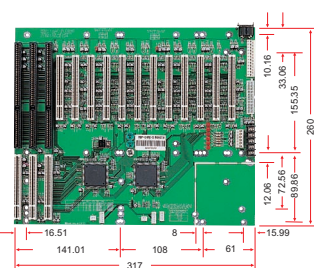
PBP-14AC

14-slot (12xPCI) Active PICMG Backplane



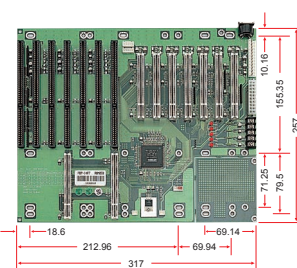
PBP-14AC-B

14-slot (12xPCI) Active PICMG Backplane



PBP-14A7

14-slot (7xPCI) Active PICMG Backplane



PBP-08A7

8-slot (7xPCI) Active PICMG Backplane

