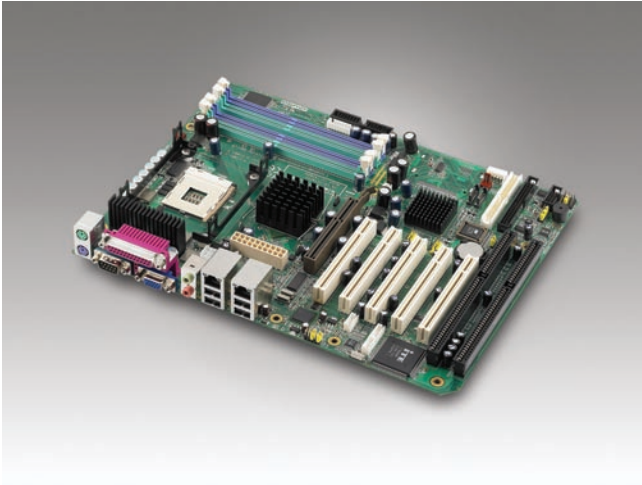


AIMB-742

Socket 478 Pentium® 4/Celeron® D/ Celeron Processor-based ATX with AGP/Dual GbE LAN



Features

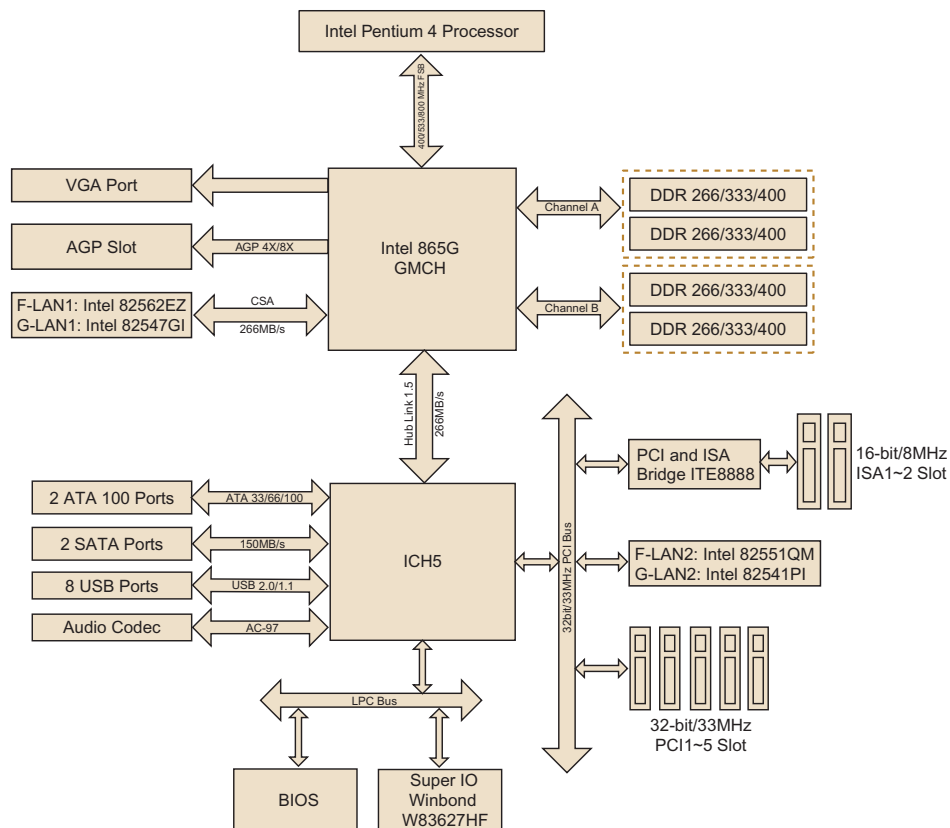
- Intel® 865G chipset 400/533/800 MHz FSB
- Supports dual channel DDR 266/333/400 SDRAM
- Chipset integrated VGA
- Supports up to 2 Serial ATA devices
- Onboard AGP 8X slot
- Supports 10/100Base-T Ethernet or 10/100/1000Base-T Ethernet
- CMOS automatic backup and restore to prevent accidental data loss of BIOS setup
- Compatible with Advantech's 1U, 2U, 4U, 5U and 7U chassis



Specifications

Processor System	CPU (90nm/ 130nm)	Intel® Pentium® 4	Intel® Celeron® D	Intel® Celeron®
	Max. Speed	3.06 GHz (533 FSB) 3.4 GHz (800 FSB) * Vcore 1.75V CPU (Willamette) not supported	3.06 GHz	2.8 GHz
	L2 Cache	256/512/1024 KB	256 KB	128/256 KB
	Chipset	Intel 865G + ICH5		
	BIOS	Award™ 4 Mbit FWH		
	Front Side Bus	400/533/800 MHz		
Expansion Slot	AGP	AGP 3.0 with 4X and 8X, 0.8 V and 1.5 V, 1 slot		
	PCI	32-bit/33 MHz, 5 slots (1 shared with ISA slot)		
	ISA	16-bit/8 MHz, 2 slots		
Memory	Technology	Dual channel DDR 266/333/400 SDRAM		
	Max. Capacity	4 GB		
	Socket	184-pin DIMM x 4		
Graphic	Controller	Chipset integrated VGA controller		
	VRAM	Dynamically shared system memory up to 64 MB		
Ethernet	Interface	10/100Base-T or 10/100/1000Base-T		
	Controller	LAN 1: Intel 82562EZ (FE); Intel 82547GI (Gigabit, CSA) LAN 2: Intel 82551QM (FE);82541PI (Gigabit)		
	Connector	RJ-45 x 2		
SATA	Max. Data Transfer Rate	150 MB/s		
	Channel	2		
EIDE	Mode	ATA 100/66/33		
	Channel	2 (Max. 4 devices)		
I/O Interface	VGA	1		
	USB	8 (USB 2.0, 480 Mbps; 4 external ports and 4 onboard pin headers)		
	Audio	2 (Line-Out and Mic-In)		
	Serial	2 (RS-232, 1 port and 1 onboard pin header)		
	Parallel	1 (SPP/EPP/ECP)		
	FDD	1		
	PS/2	2 (keyboard and mouse)		
Watchdog Timer	Output	Interrupt, system reset		
	Interval	Programmable 1 ~ 255 sec.		
Miscellaneous	Solid State Disk	1 Type I/II CompactFlash socket (Optional, upon request)		
Power Requirement	Typical	Pentium 4 3.2 GHz, 4 GB DDR 266/333/400 SDRAM		
		+3.3 V	+5 V	+12 V
		9.26 A	0.43 A	5.42 A
Environment	Temperature	Operating		Non-Operating
		0 ~ 60° C (32 ~ 140° F), depends on CPU's speed and cooler solution		-20 ~ 70° C (-4 ~ 158° F)
Physical Characteristics	Dimensions (W x D)	304.8 x 228.6 mm (12" x 9")		

Block Diagram



Ordering Information

Part Number	Fast Ethernet LAN	Gigabit LAN	AGP slot
AIMB-742VE-00A2E	Single	-	Yes
AIMB-742E2-00A2E	Dual	-	Yes
AIMB-742VG-00A2E	-	Single	Yes
AIMB-742G2-00A2E	-	Dual	Yes

Packing List

Part Number	Description	Quantity
1700340640	FDD cable	x 1
1701400452	IDE HDD cable	x 2
1700003194	Serial ATA HDD data cable	x 2
1703150102	Serial ATA HDD power cable	x 2
1701090401	COM port cable kit	x 1
9689000068	Jumper pack	x 1
1962015680	I/O port bracket	x 1
-	Startup manual	x 1
-	Utility CD	x 1

Bracket View



AIMB-742VE-00A2E
AIMB-742VG-00A2E



AIMB-742E2-00A2E
AIMB-742G2-00A2E

Riser Card

Part Number	Description
AIMB-RP30P-03A1E	2U riser card with 3 PCI slot expansion
AIMB-RP10P-01A1E	1U riser card with 1 PCI slot expansion

Accessories

Part Number	Description
1759214200	CPU cooler for Pentium 4 processor up to 2.8 GHz (70 W), for 1U chassis
1750000257	CPU cooler for Pentium 4 processor up to 3.2 GHz (89 W), for 2U or higher chassis
1700002314	USB cable with four ports, 30.5cm
1700002204	USB cable with dual ports, 27cm
1700003195	USB cable with dual ports, 17.5cm